

# St Helena Boer War The Deadwood Camp Censor's and their Censor Marks April 1900 to July 1902

## Background

In 1899 the UK found itself embroiled once again in conflict in South Africa in what was to be known as the 2nd Boer War. Early in the conflict a large number of Boers were taken prisoner. They were held in prison camps at Green Point, Cape Town, Belle Vue, Simonstown, or on prison ships and transports in Simons Bay. It was decided to remove a large number of prisoners to overseas camps. Camps were set up first on St Helena, then Ceylon, India and finally Bermuda.

The first 500 Boer prisoners arrived at the island of St Helena in the South Atlantic Ocean on the S.S. "*Milwaukee*" on 10th April 1900. As the prison camp at Deadwood was still being set up they did not land until 13th April 1900. Their commander General Piet Arnoldus Cronje was landed on 14th along with his wife who had accompanied him. Censoring of mail started straight away.

## Contents

The objective of the exhibit is to illustrate the camp and the initials of the eight different censors who were responsible for the censoring of the mail into and out of the Deadwood Camp, as well as four of the five different censor marks used. Also illustrated is the straight line \*DEAD\*WOOD\*CAMP\* cachet. This was brought into use with the opening on the second camp at Broad Bottom in early 1901 to differentiate mail from the different camps.

Sheet 1.	Introduction, objective of exhibit.
Sheet 2.	Picture postcards illustrating Deadwood Camp.
Sheet 3.	Picture postcards of the 4th Gloucestershire Regiment 21st April 1900 to 8th July 1901 and 3rd Wiltshire Regiment 7th July 1901 to 13th August 1902 who were the guard at Deadwood Camp.
Sheets 4 to 7.	Type 1 censor mark and the censors F. W. Alexander, the first censor, E. B. Walton, J. H. M. Brown, and Charles E. de Beer.
Sheet 8.	Straight line *DEAD*WOOD*CAMP* cachet used for a short period after the opening of a 2nd camp at Broad Bottom in early 1901. Also the Type 1 censor mark signed by Lt. W. J. Maule.
Sheet 9.	Type 1 censor mark with the military censor Captain W. J. P. Marling. He along with Lt. W. J. Maule were responsible for censoring the mail of the German prisoners that were later transferred to the new Broad Bottom Camp.
Sheet 10	Type 1 censor mark signed by Baron Von Ahlefeldt, Chief Censor from March 1902.
Sheet 11	Incoming mail to the Camp Hospital at Deadwood Camp, and an item of inter-camp mail from Ceylon.
Sheet 12	Type 3 censor mark with initials of E. B. Walton and Baron Von Ahlefeldt.
Sheet 13	Type 3 censor mark on incoming mail including scarce red ink.
Sheet 14	Type 1 and Type 3 censor marks with the initials of P. Roux the Press Censor.
Sheet 15	Type 4 censor mark censored by P. Roux on scarce 1½d rate front, and on rare incoming cover.
Sheet 16	Rare Type 7 censor mark one of only five recorded used on incoming picture postcard.

**Items outlined in red indicate scarcity.**

## References

*St. Helena Postal and Censor Markings 1815 to 2002*, B. Mabbett. West Africa Study Circle 2002.

*Con William Waldemar, Baron Von Ahlefeldt*. Robin A, Woodruff. Published privately.

*St. Helena The Philately of the Camps for Boer Prisoners of War April 1900 to December 1902*. B. Mabbett and W. P. Vevers

(Due to be published later this year).

Innes card No. 28

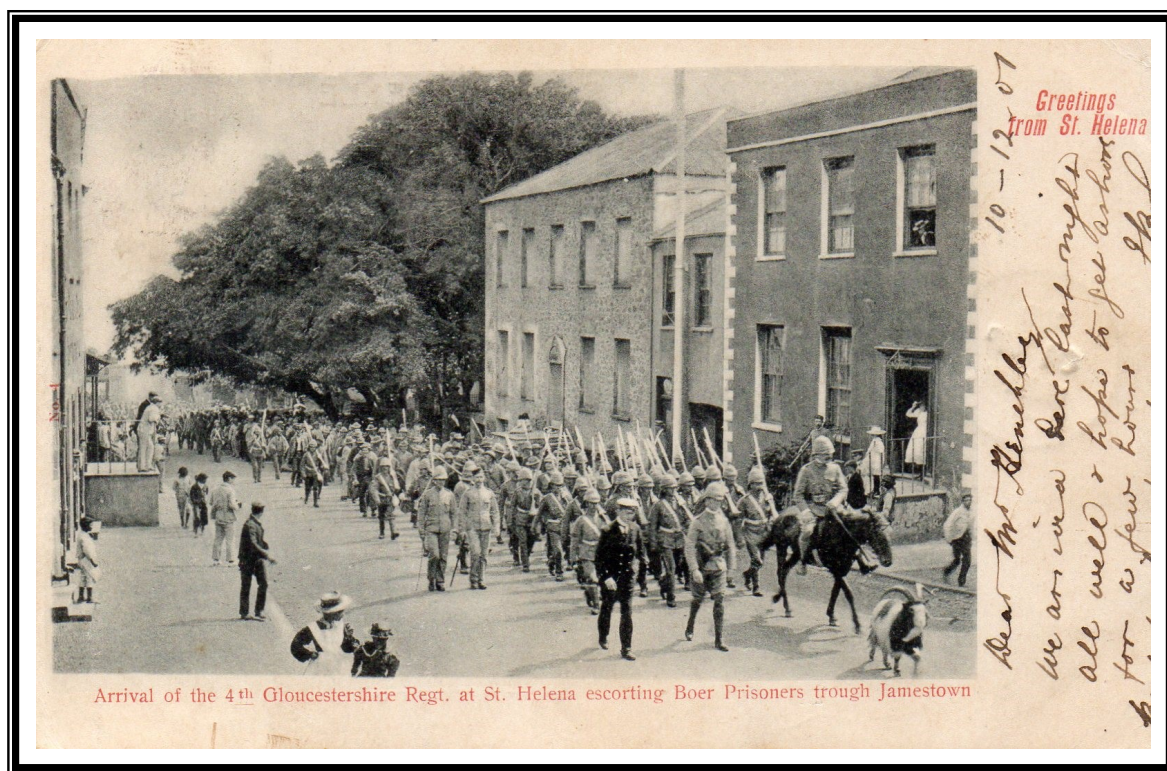


Postcard to Lugny, France 17th December 1901 sent from Deadwood Camp.

Innes card No 29



Postcard to St. Gallen, Switzerland 15th May 1902. Head Office censor mark on address side.

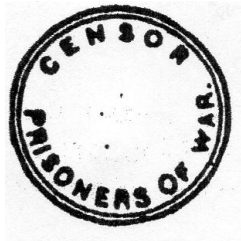
Innes card No. 4

4th Gloucestershire Regiment stood Guard at Deadwood Camp 21st April 1901 to 8th July 1901.

This card is from a sailor on board the Galician which arrived on 10th December 1901. card was posted on 11th December 1901.

Innes card No. 2

Innes card No. 2 (incorrectly numbered) should have been No. 25. The 3rd Wiltshire Regiment replaced the 4th Gloucestershire's at Deadwood Camp from 7th July 1901 to 13th August 1902.



Type 1  
CENSOR  
PRISONERS OF WAR



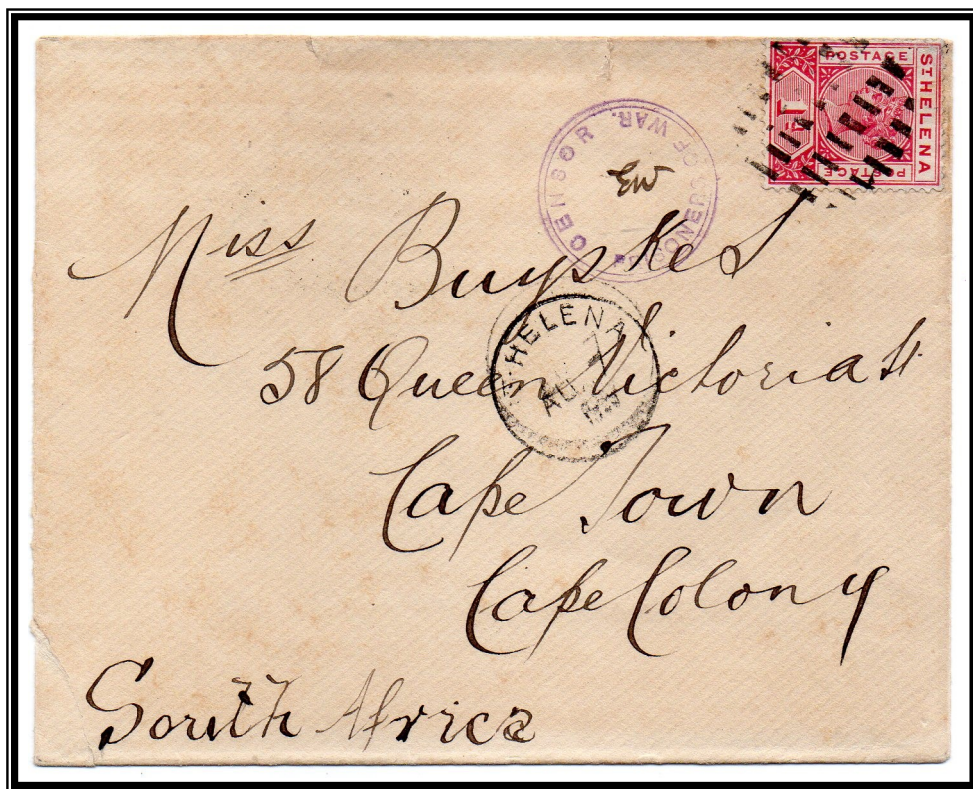
Frederick William Alexander  
Chief Censor April 1900 to January 1902



Type 3  
PASSED BY/CENSOR/  
DEADWOOD.



F. W. Alexander arrived on the S.S. "Milwaukee" on 10th April 1900. His initials have been recorded with the type 1 censor mark from 28th April 1900 until 6th March 1902. He was on leave from 16th July 1901 to 6th September 1901. He was known by the prisoners as Alexander the rat.



Mr. E. B. Walton was the longest serving censor. He censored mail from June 1900 to May 1902.

Type 1 censor mark initialled E. Walton 7th August 1900.

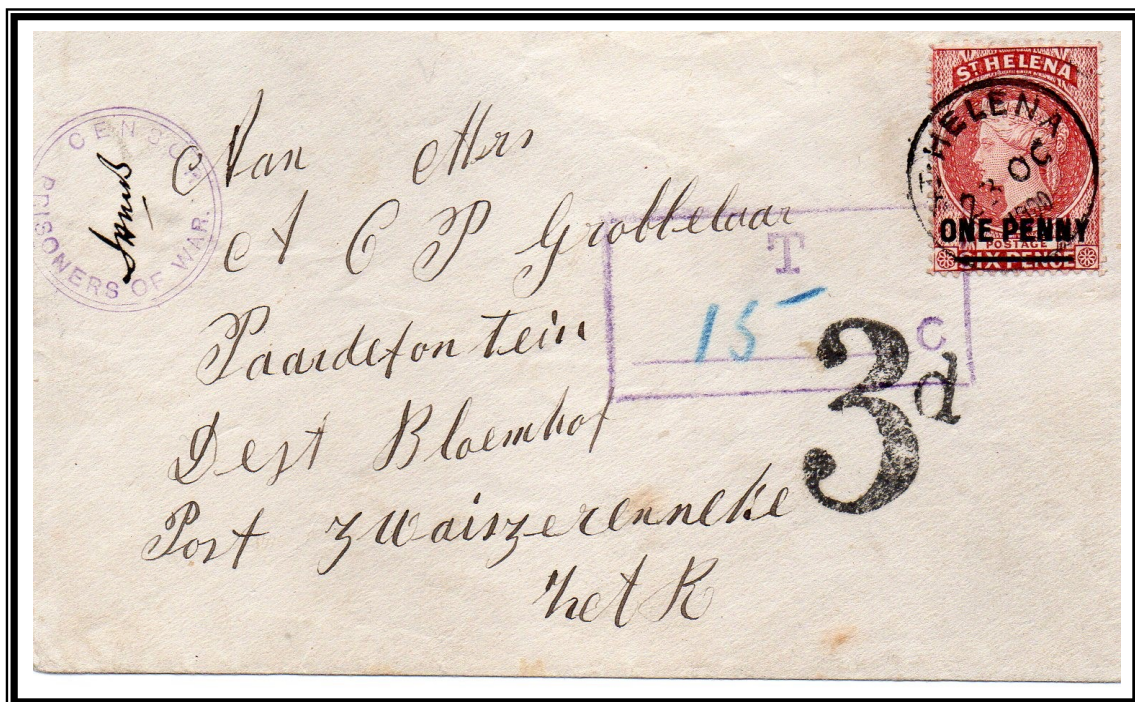
Registered cover to his wife Mrs. W. A. Walton Cape Town 20th December 1900.

Type 1 censor mark initialled E. W.



The full name of this censor is unknown. He arrived on the "Bavarian" on 24th January 1901. He left on the "Mohawk" on 8th July 1901, and was shortly sent to Bermuda to become a censor there.

Type 1 censor mark in grey-blue on cover to the Z.A.R. 28th August 1900.



Type 1 censor mark in violet on under franked cover to the Z.A.R. 23rd October 1900.

St Helena Mabbett Type 3 boxed Tax mark and handstruck 3d applied in South Africa.



Charles E. de Beer censored mail for approximately six months. He arrived on the “*Bavarian*” on 24th January 1901, and left on the “*Mohawk*” on 8th July 1901. Cover to the Woman’s Camp at Johannesburg With Type 1 censor mark with his initials, and straight line \*DEAD\*WOOD\* CAMP\* cachet on the reverse of the cover.



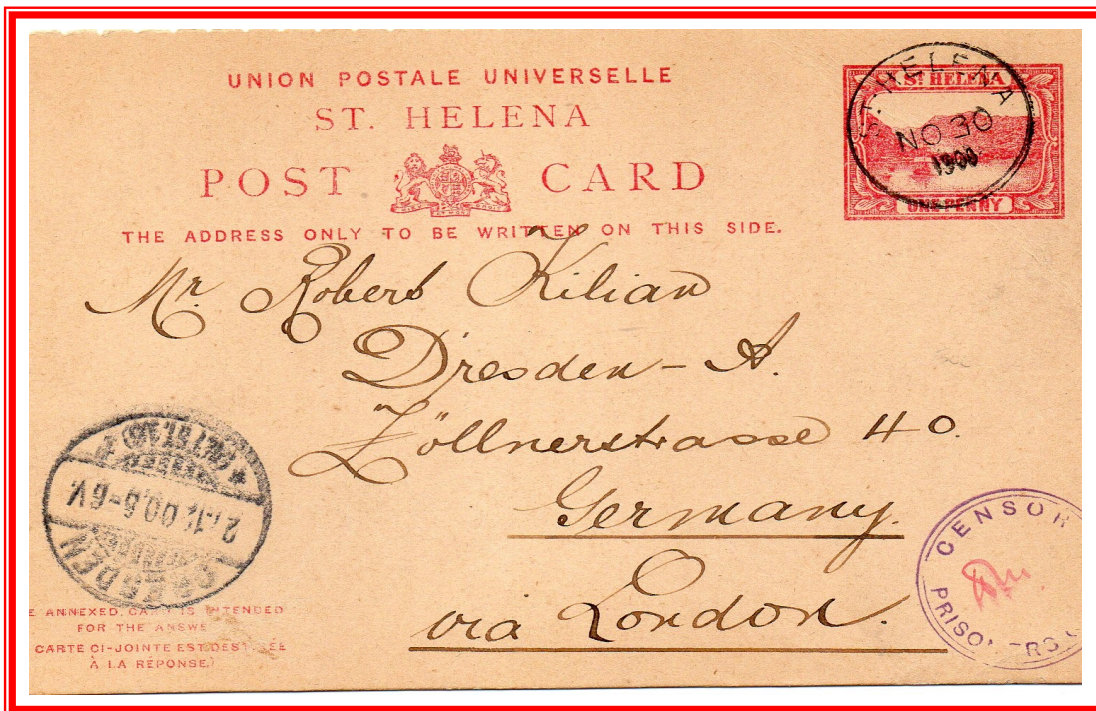
Charles E. de Beer’ initials with Type 1 Censor mark and Straight line \*DEAD\*WOOD\* CAMP\* cachet. This cachet was in use from January 1901 to 20th July 1901.

•DEAD•WOOD•CAMP•

Straight line  
\*DEAD\*  
WOOD\*CAMP\*  
cachet on address  
side of Picture  
Postcard.

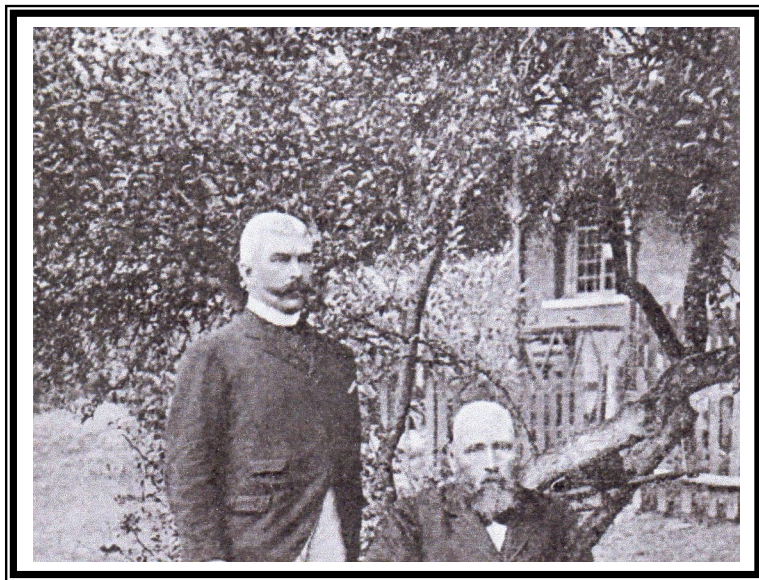


Censor Lt. W. J. Maule



Lt. W. J. Maule of the 1st West India Regiment was responsible for Censoring the mail of German prisoners between 13th November 1900 and 5th January 1901.

The 1st West India Regiment was removed from St Helena following a mutiny of the troops on 13th January 1901.



Straight line

**\*DEAD\*WOOD\*CAMP\***

cachet in use from January 1901 to

20th July 1901.

Colonel Schiel with General P. A.  
Cronje (seated) outside Kent Cottage,  
Cronje's residence while held on  
St Helena.

Captain W. J. P. Marling who took  
over the censoring of the German  
mail after the departure of Lt. W.  
J. Maule.

Marling is seen here sitting outside  
his hut.



*Captain Marling outside his cabin (Deadwood)*



Type 1 censor mark with  
the initials of Captain W.  
J. P. Marling. His initials  
have been recorded used  
between 19th January  
1901 and 25th February  
1901.

Baron Von Ahlefeldt took  
over as Chief

Censor after F. W.

Alexander became Staff

Interpreter at Dead  
Wood Camp. He arrived

on the "*Britannic*" on  
24th February 1902.

Type 1 censor mark in  
red with his initials 24th

April 1902.



The initials of Baron  
Von Ahlefeldt have  
been recorded used  
with the Type 1  
censor mark between  
1st April 1902 and 8th  
May 1902.

Baron Von Ahlefeldt left St Helena on the "*Golconda*" on 21st October 1902  
after overseeing the repatriation of the prisoners at the end of the war.



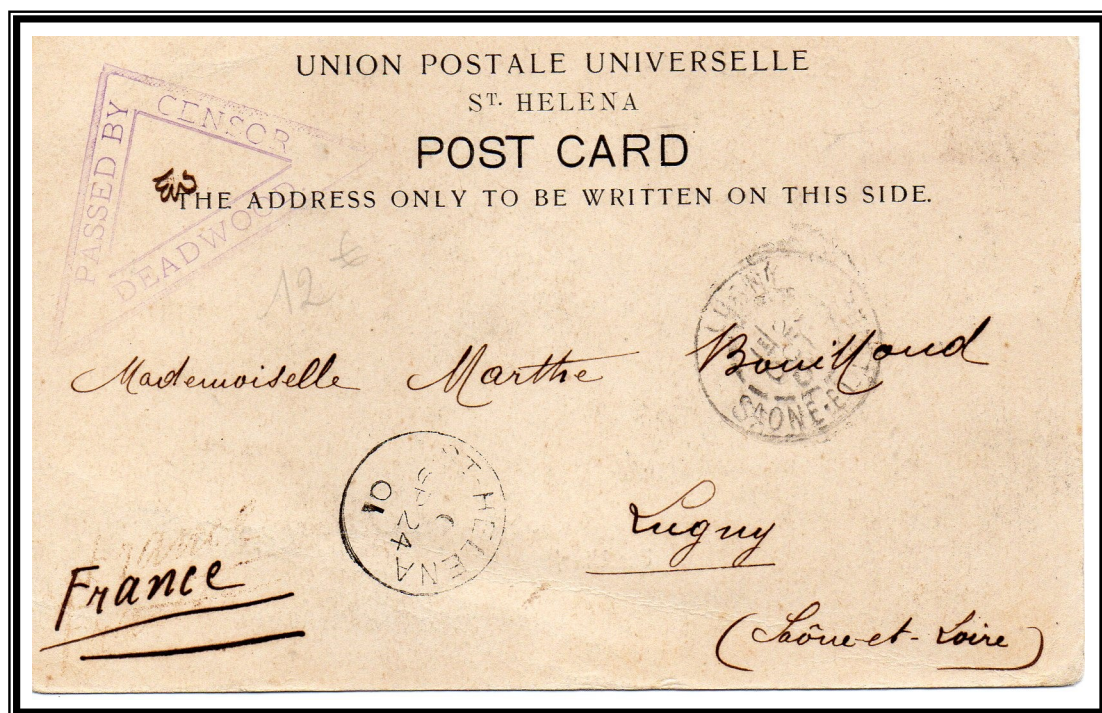
Apart from the main hospital in Jamestown each camp had its own hospital to cater for minor injuries and ailments.

Incoming cover addressed to a Hospital Orderly at Dead Wood Camp November 1901.

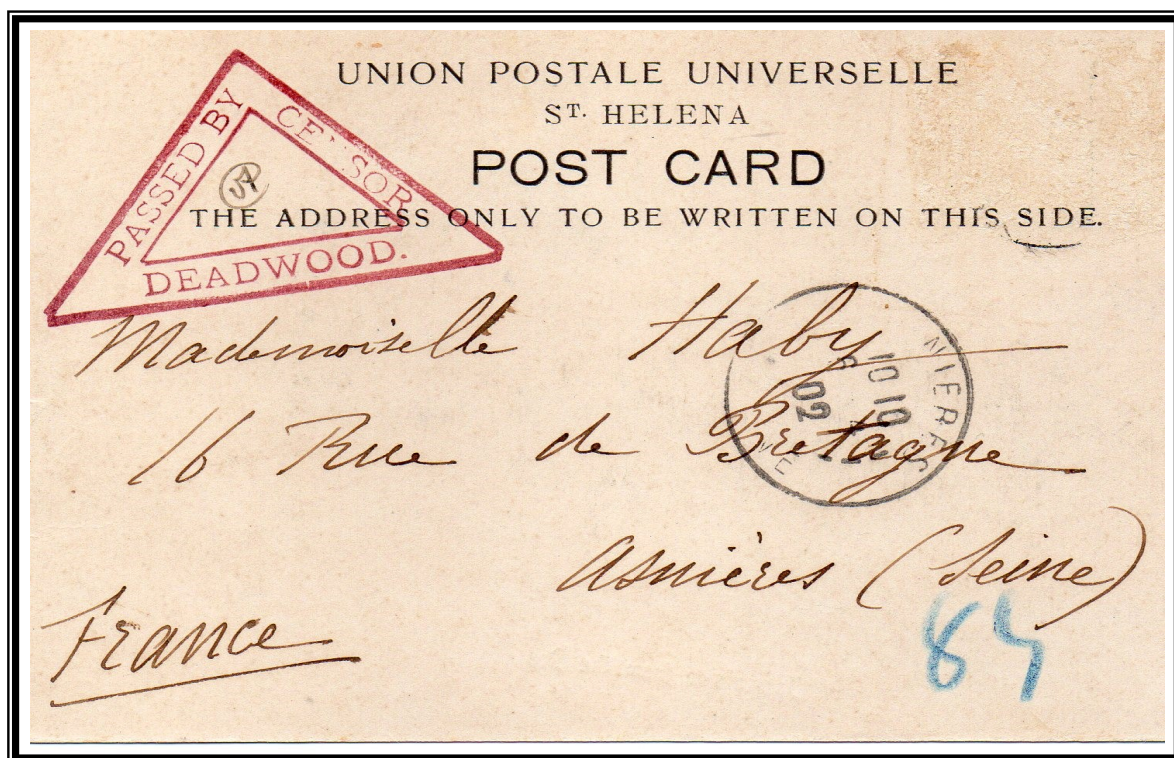


Mail from a camp in Ceylon addressed to Deadwood Camp dated February 21st 1901

with Diyatalawa Ceylon censor mark.



Hand coloured Picture Postcard to Lugny, France from a Boer Officer who was allowed to live outside the main camp at Rock Rose Cottage. Type 3 PASSED BY/CENSOR/DEADWOOD with initials E.W.



Hand coloured Picture Postcard to France with Type 3 censor mark with the initials of Baron Von Ahlefeldt

The Type 3 censor mark with the initials of Baron Von Ahlefeldt between 8th March 1902 to September 1902.



Incoming mail to Capt. B. G. V.  
De Witt Hamer with Type 3  
censor mark in violet.

The Type 3 censor mark in  
violet has been recorded used  
between 1st July 1901 and 6th  
February 1902

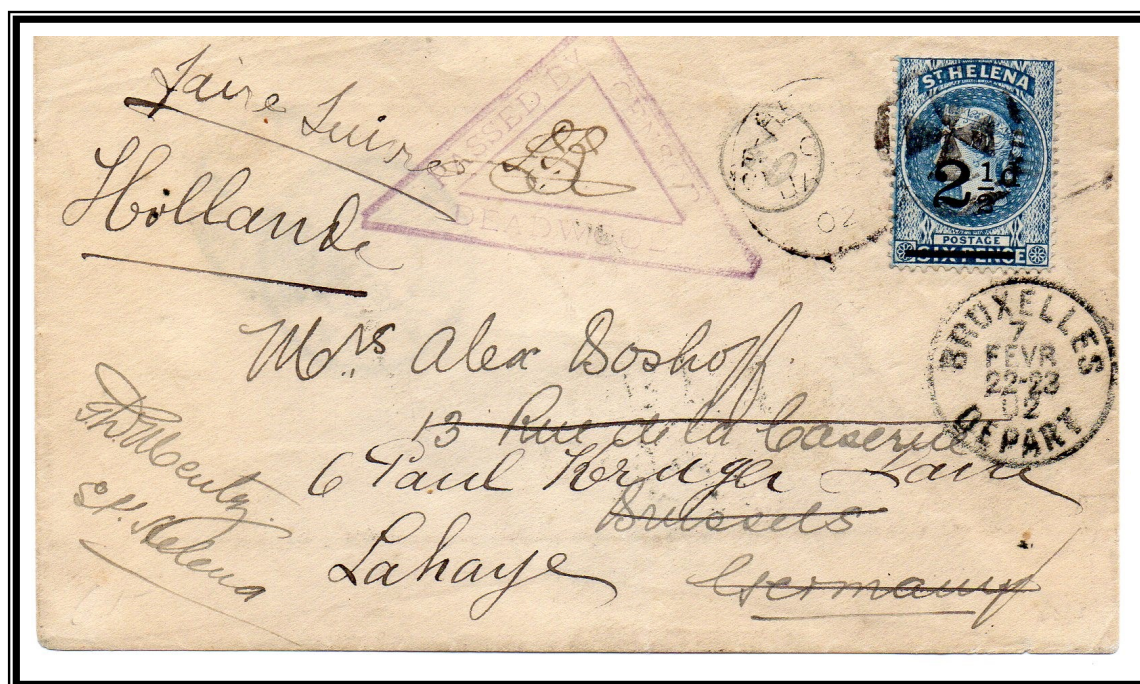
St Helena arrival for November  
1901.

Mourning cover to Colonel  
Von Braun with Type 3  
censor mark in red.  
The Type 3 censor mark in  
red has been recorded used  
between 10th February 1902  
and 2nd March 1902.

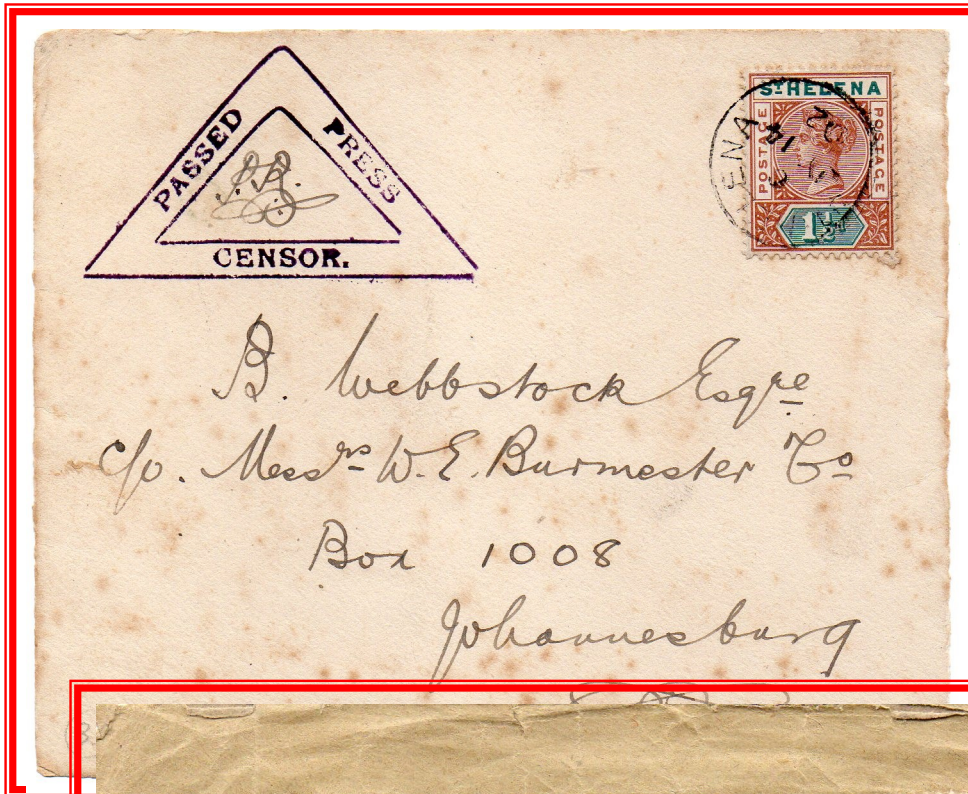




P. Roux was the Press Censor. He arrived on the "Arundel Castle" on 9th July 1901. His initials have been recorded used with the Type 1 censor mark from 23rd July 1901 and 12th September 1901.



Type 3 Censor Mark initialled by P. Roux. The initials of Mr. P. Roux have been recorded used with the Type 3 censor mark between 13th September 1901 and 18th February 1902.

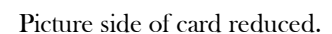
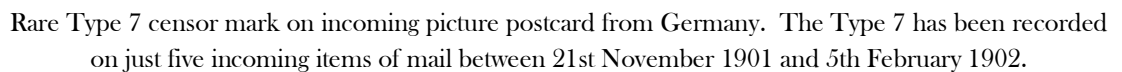


Rare PASSED/PRESS/CENSOR  
mark initialled P.R.

The Type 4 Press Censor mark is  
recorded used between 3rd March  
1902 and 14th July 1902, this being  
the latest recorded date of use.  
Front also shows the rare 1½d  
postage rate in use for a short  
period in 1902.



Rare Type 4 Passed Press censor in an item of incoming mail. The Type 4 on incoming mail has been recorded  
on a handful of items between 21st February 1902 and 5th April 1902.



16.